

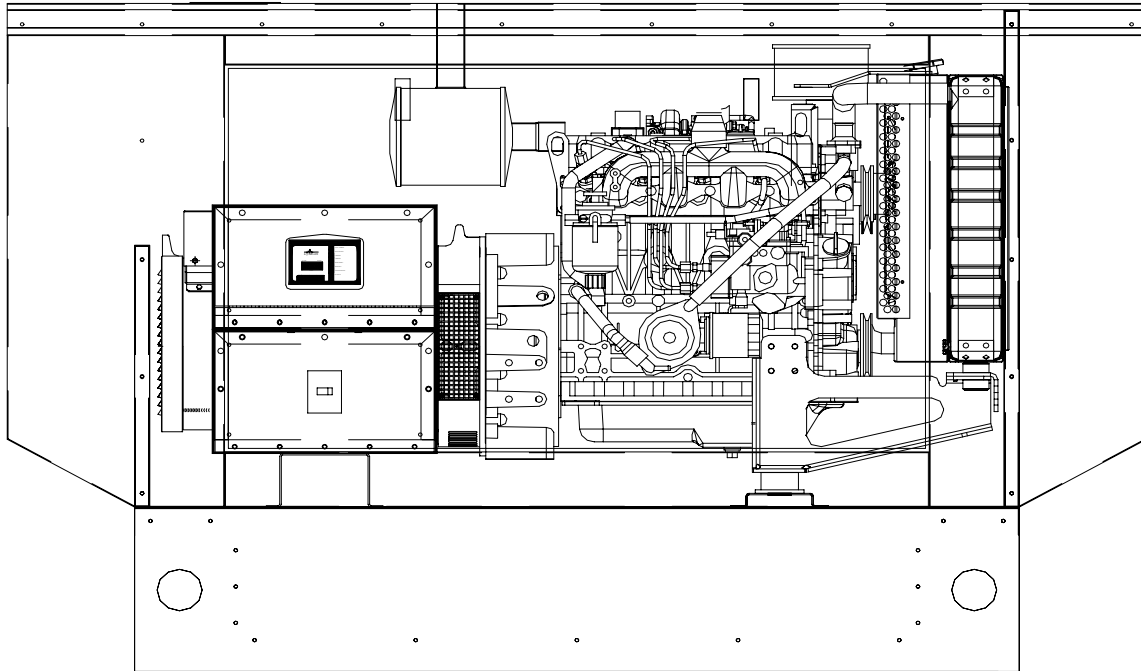
Hardy Diesels & Equipment Inc
15749 Lyons Valley rd.
Jamul, CA. 91935
www.hardydiesel.com
800 341 7027 619 669 1995

PE-26I

Isuzu Powered Generator Set

Stand By Power Rating
26 KW 60 Hz / 26 KVA 50 Hz

Prime Power Rating
24 KW 60 Hz / 24 KVA 50 Hz



Genset Features:

- State of the art design & testing for back up power applications. Great generator set for residential and industrial use.
- UL 2200 Compliance Available; Prototype tested; NEMA MG1 Evaluation; Motor starting ability; Short circuit testing.
- Reliable Isuzu diesel powered engine, Easy to service and get parts; longer engine life; low cost operation & better fuel utilization for real fuel savings.
- Totally self-contained fuel system with a 41 gallon plastic tank.
- Total containment base will contain fuel, coolant and engine oil.
- Extremely clean power under any loads for voltage/frequency sensitive applications. Electronic governor holds frequency to 0.25% and the solid state voltage regulator holds the voltage to 1%.
- Power & Electric Company can provide full service packages and trouble shooting for the entire unit. We can also provide any parts that you will need and they will always be available of the shelf.
- We can also provide you switchgear, transfer switches and accessories.

- Sound Level 65 dbs @ 7 meters.

PE-26I

Engine Specifications

Engine

Make	Isuzu	Model	4LE1TNYGV
Cylinders	4	Displacement	2.29 Liter (140 Cu.in)
Bore/Stroke	88 (3.5) x 94 (3.7)	Compression Ratio	21.3:1
Intake Air	Turbo Charged	Rated RPM	1800
Connecting Rods	3-Drop Forged Steel	Cylinder Head	Cast Iron
Pistons	3-Aluminum Alloy	Crankshaft	Forged Steel
Starter Motor	12V 290A @ 0° C	Electrical System	12V

Valve Train

Lifter type	Solid
Intake Valve Material	High temp
Exhaust Valve Material	High temp

Engine Governor

Electronic	Standard
Frequency Regulation No Load to Full	.5%
Steady State Regulation	±0.25%

Lubrication System

Type of Oil Pump	Gear
Oil Filter	Full Flow Cartridge
Oil System Capacity	6-Liters

Cooling System

Type of System	Pressurized Closed Recovery	
Water Pump		Prelubed, Self Sealing
Type of Fan		Pusher
Number of Blades		10
Diameter of Fan		16
Coolant Capacity	Radiator – lit. (US Gal)	8 (2)
	Engine – lit. (US Gal)	6 (.9)
Coolant flow/min	60 Hz – lit. (US Gal)	101 (27)
	50 Hz – lit. (US Gal)	97 (24)
Heat Rejection to Coolant	BTU/hr.	1476
Inlet air	60 Hz – m /min. (cfm)	3800
	50 Hz – m/min. (cfm)	2700
Max operating air temp onto radiator		
	°C (°F)	43 (110)

Exhaust

Exhaust Flow rated At 60 Hz m /min. (cfm)	255	
	50 Hz m /min. (cfm)	235
Max recommended back Pressure Kpa (Hg)	3	
Exhaust temp at rated output	°C (°F)	235(455)
Exhaust outlet size	NPT (female)	2"

Combustion Air Requirements

Flow at Rated power 60 Hz – m /min. (cfm)	150
50 Hz – m /min. (cfm)	135

Fuel System

Fuel	#2D Diesel Fuel
Fuel Filter	Fleetguard (FS1235)
Fuel Check Valve	None Required
Fuel pump	Engine Driven Gear type
Fuel Shutoff Solenoid	12V 1.2 Amp
Fuel Line (Supply)	8 mm (0.3 in.) ID
Fuel line (Return)	8 mm (0.3 in.) ID

Generator Specifications

Make	Mecc Alte	Model	ECO28-VL/4
Number of Leads	12	Generator Type	Rotating Field
Voltage Regulator	SR7	Rotor Insulation	Class H
Coupling	Direct, Flexible Disc		

Alternator	Self ventilated and Drip Proof
Telephone Interference Factor	<45
Total Harmonic Distortion	<2%
Voltage dip upon full load	20% for .6 of a second
Voltage Rise upon full load	24% for .6 of a second
Voltage regulation	
No-load to Full load-%	±1% Maximum

Excitation System

Regulation	Solid State ±1% regulation
------------	----------------------------

Generator Features

Generator is designed and built within NEMA IEEE and ANSI standards for temperature rise.

Single Phase: Brushless Exciter.

Skewed rotor for smooth voltage wave.

Sustain short circuit current at 300% of rated current up to 10 seconds.

Alternator is self ventilated and drip proof constructed.

Alternator has main line circuit breaker capable of handling full output capacity and overload protection.

All models are prototype tested for motor starting.

All our generators models meet temperature rise standards for class "H" insulation which is the highest in its class.

Generator Operation Systems Data

	<u>Rated At</u>	
<u>Output Voltage/KW-60 Hz</u>		
240V 1-Phase @ 1 pF	26KW	80 Amps
120/208V 3-Phase @ .8 pF	26KW	90 Amps
120/240V 3-Phase @ .8 pF	26KW	75 Amps
277/480V 3-Phase @ .8 pF	26KW	40 Amps
<u>Output Voltage/KW-50 Hz</u>		
220/380V 3-Phase @.8 pF	26kVA	40 Amps
240/416V 3-Phase @.8 pF	26kVA	50 Amps

Fuel Consumption

Fuel Consumption-60Hz @ Load	25%	50%	75%	100%
Gallons per Hour	.49	.98	1.49	1.99
Liters per Hour	1.88	3.77	5.65	7.54
 Fuel Consumption-50Hz @ Load	 25%	 50%	 75%	 100%
Gallons per Hour	.41	.83	1.24	1.66
Liters per Hour	1.57	3.15	4.72	6.30

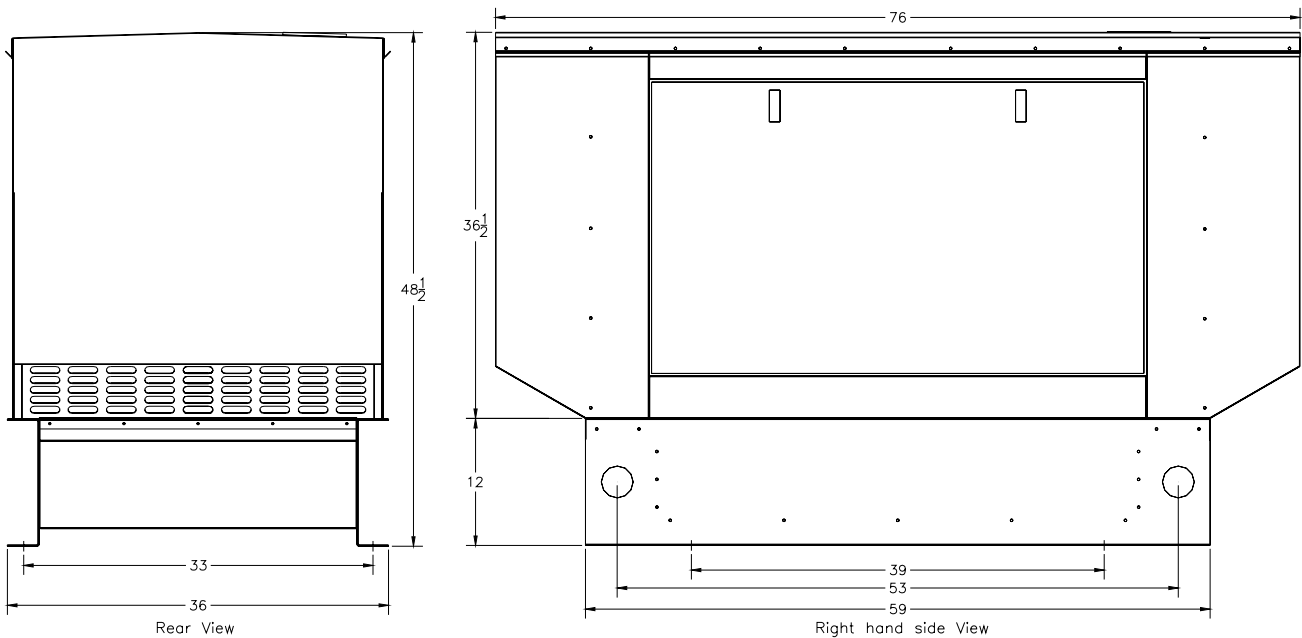
Standard Engine and Safety Features for Genset

- | | |
|-------------------------------------|---------------------------------------|
| * Stainless Steel Exhaust Flex | * Critical Exhaust Silencer |
| * High coolant Temperature Shutdown | * Battery Cables |
| * Low oil Pressure Shutdown | * Battery Charger Alternator |
| * Crank Limiter (solid-state) | * Battery Tray |
| * Over speed Shutdown (solid-state) | * Vibration Mounts |
| * Oil Drain Extension | * 12 volt, Solenoid-activated Starter |
| * Radiator Drain Extension | * Air Cleaner |
| * Closed Coolant recovery System | * Fan Guard |
| * Control Console | * Radiator Duct |
| * Main Line Circuit Breaker | * Containment Pan |

Options List Features for Genset

- | | | |
|-----------------------------|----------------------------|------------------------------|
| -Coolant Heater | -Automatic Transfer Switch | -Critical Exhaust Silencer |
| -Oil Heater | -Water separator | -Sound Attenuating Enclosure |
| -Genset Vibration Isolators | -Optima 12V Battery | -2A Battery Charger |
| -Battery Heater | -Amp & Voltage Metering | -Single Axle trailer |

Specifications and Design are Subject to Change Without Notice.



Hardy Diesels & Equipment Inc
 15749 Lyons Valley rd.
 Jamul, CA. 91935
 www.hardydiesel.com
 800 341 7027 619 669 1995